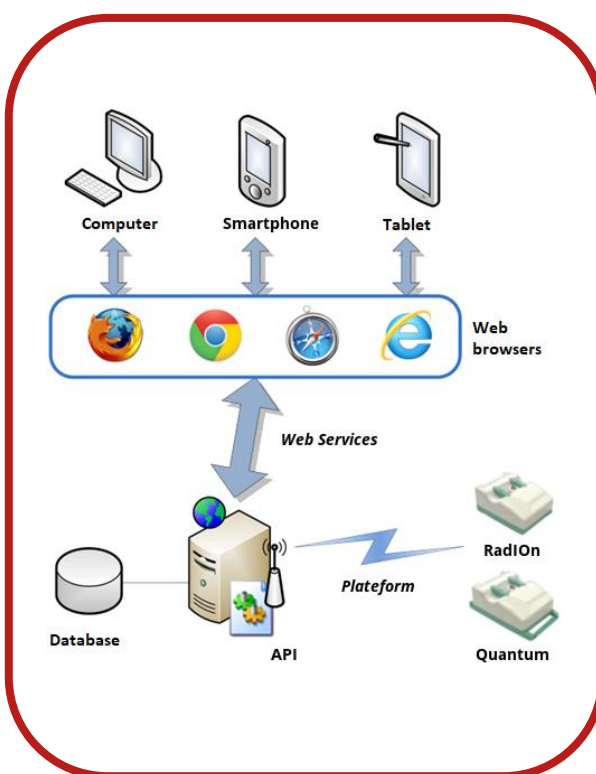


ZigBee STARTER KIT



KIT COMPONENTS

8 receiving devices RadlOn

3 emitting devices

1 coordinator device

3 expansion boards with sensors

5 linear polarisation external antennas

5 circular polarisation external antennas

1 Quantum charger et 1 LiPo battery charger

Viewing and setting softwares included + datasheets

POTENTIAL APPLICATIONS

Statement of information

Movements tracking

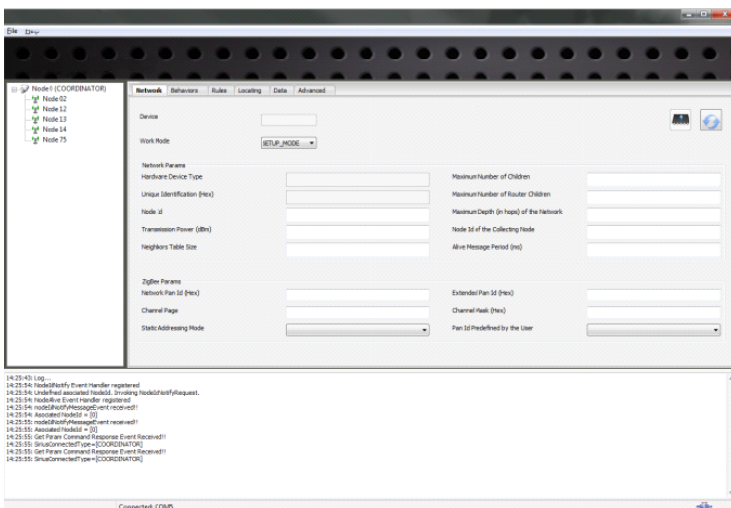
Events notifications

Phone application coupling (SMS, e-mail, etc.)

Environmental conditions coupling

Monitoring and setting softwares

- 📍 Parameters Intuitive setting
- 📍 API : 2 powerful engines to develop specific applications, pour développer des applications spécifiques, automation and localization engines.
- 📍 Communication protocol 802.15.4 / IEEE™ ZigBee standard



Network setting software

Viewing software

